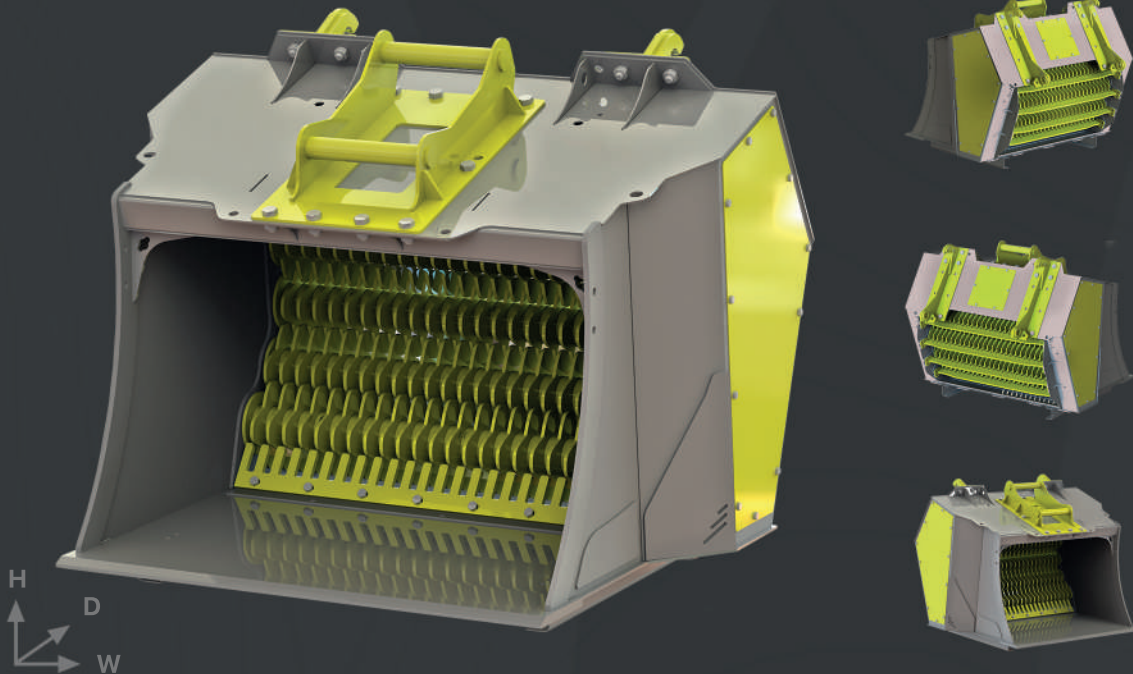


# VPH 4-1500 Screening Bucket

VPH 4-1500 is a classic in the Viper line. It's suitable for a wide range of machine sizes, from loaders to excavators. Available in a broad spectrum of optimized versions for fine screening, aeration, mixing, and light crushing.



## Specifications

### Base Machine

Excavator: 14,000 - 21,000 kg  
(31,000 — 46,000 lbs)

Wheel loader: 9,000 - 15,000 kg  
(20,000 — 33,000 lbs)

### Flow Rate

Oil Flow min – max: 120 - 220 l /min  
(32 - 58 gal /min)

### Pressure

Oil Pressure: 210/250 bar (3,000/3,600 psi)

### Volume

ISO/SAE: 1.0 - 1.12 m<sup>3</sup> (1.3 - 1.46 yd<sup>3</sup>)  
Screen area: 1.3 m<sup>2</sup> (14 ft<sup>2</sup>)

### Dimensions

Height: 1,300 mm (51.0 in)  
Width: 1,720 mm (67 7/10 in)  
Depth: 1,500 mm (59.0 in)

### Weight

Without accessories: 1,350 kg (2,980 lbs)

### Additional notes:

- Product Name: VP = Viper; H = Horizontal axles, V = Vertical axles; first number = number of axles, second number = axle length in mm.
- Base machine weight recommendations are suggestive. Check the suitable tipping load from the base machine user manual.
- Hydraulic flow values are indicative. Always verify the correct values for the application from the manufacturer.
- Product weight is based on a bucket without any additional equipment. Blade spacing and blade thickness may affect the weight.
- The oil pressure values are indicative. Always verify the correct values for the application from the manufacturer.
- Changes to document information without prior notice are reserved.

**VIPER METAL**  
Efficiency With Finnish Excellence