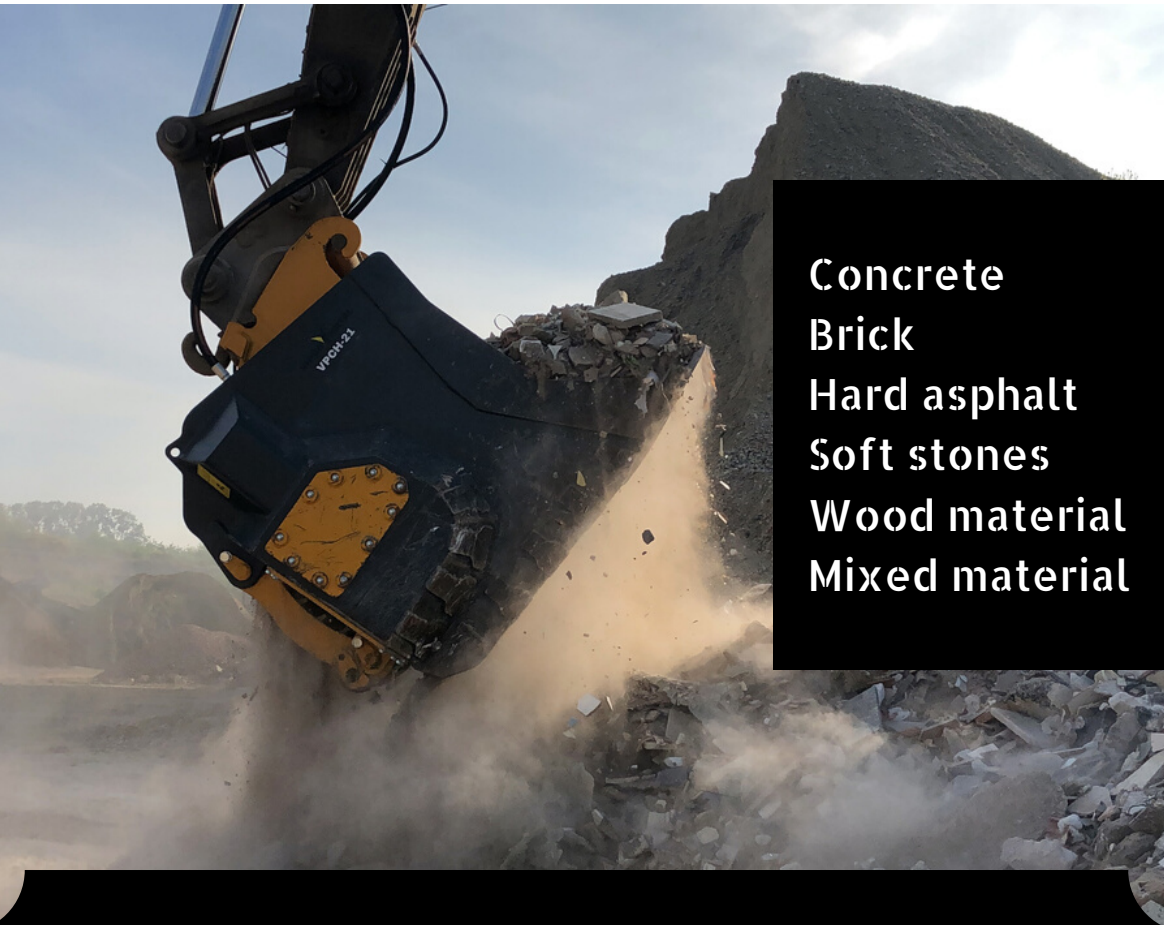
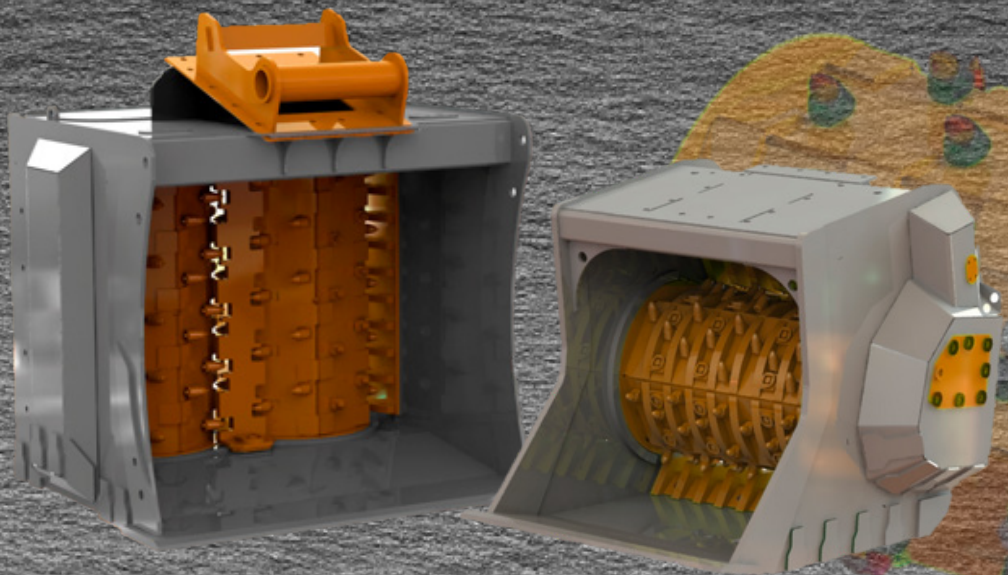


VIPER METAL



Concrete
Brick
Hard asphalt
Soft stones
Wood material
Mixed material

CRUSHING BUCKETS



Production efficiency, low operating costs and versatility has been the driving force to develop new technology patented crushing buckets. All products are designed and manufactured in Finland using only the best quality wear steel and quality components.



LESS
MAINTENANCE



PATENTED
STRUCTURE



EASY AND QUICK
TO USE



21-40
TONNES MACHINES



MAXIMUM
VOLUME



SILENT
PERFORMANCE



HIGH CAPACITY



COST EFFECTIVE



LIGHT WEIGHT

www.vipermetal.fi

HARD ASPHALT



CONCRETE



SOFT STONES



TECHNICAL DATA




VPCH - 21



VPCV - 22

Width W (mm)	1650	1750
Depth D (mm)	1800	1550
Height H (mm)	1450	1450
Weight (kg)	2900	3100
Rotor width (mm)	1150	1150
Volume ISO/SAE (m3)	0,95/1,3	1,5/1,7
Particle size category (mm)	0-40	60-150
Recommended excavator size (ton)	24-30	24-40
Recommended oil flow (l/min)	250-400	250-400
Recommended pressure (max. bar)	330	330



Ajutech Oy
Rantatöysäntie 306
FI-63410 ALAVUS,
FINLAND



www.vipermetal.fi



info@vipermetal.fi



+358 400 911 884



All rights to changes are reserved.

Printed 07/2020